

## Notes from Mrs. Hussey

Dear Dr. Crisp Families,

We have officially re-opened the new Main Office! We are excited to show families the new spaces over the next couple of months.

We are also excited to welcome everyone this Thursday, September 19, 2024 to our Open House from 5:00 - 6:30 pm.

Warm regards,

Colleen Hussey, Principal

## Essential Dates



[zoom\\_out\\_map](#)

## Mark Your Calendars

**Thursday, September 19th** - Open House at Dr. Crisp. 5:00 pm - 6:30pm

**Friday, October 4th** - Picture Day

**Monday, October 14** - No School

**Thursday, October 17** - Family Engagement - International Night (Information to come)

**Wednesday, October 23** - Early Release Day 12:40pm Dismissal

**Tuesday, November 5** - No School/Voting/In-service day for teachers

**Thursday, November 7** - Parent Teacher Conferences 4:00 - 7:30 pm

**Monday, November 11** - No School

**Tuesday, November 12** - Picture Retake Day

**Wednesday, November 13** - Parent Teacher Conferences 4:00 - 7:30 pm

**Wednesday, November 27** - Friday, November 29 - No School

## **Additional Information about the School Year**

### **21st Century After School Program Pre-**

**Registration:** <https://www.nashua.edu/Page/1748>

### **Drop off and Pick up/School Hours:**

School hours are 8:00 AM to 2:40 PM. Your child will be marked absent/tardy if they come in after the 8:15 AM bell. Please have them come to Door 2 to be let in after 8:15 am.

### **Early Release Days:**

The district has Early Release days. On early release days students are dismissed 2 hours before their normal time, so they would be dismissed at 12:40PM. The early release days for this 2024-2025 school year are: October 23, December 11, March 19, April 16, and May 21.

### **Healthy School:**

Dr. Crisp is a healthy school which means healthy meals and snacks for your children. Birthday celebrations need to be healthy snacks for students to enjoy. Please refer to the policy if you have any questions on the [Nashua.edu](https://www.nashua.edu) website.

### **Communication:**

We are trying to cut down on the amount of paper we send home to families. The district's goal is to do everything electronically. Which means, student information update forms to be done on-line, report cards, etc.

## **New Main Entrance**

With our new Main Entrance being around the corner we have limited viewing for students that come late to school. Please make sure an adult walks the student(s) to the Main Entrance to be checked in with the secretary.

## **Dismissal**

Teachers will walk students out to Dismissal Locations at 2:40 pm.

Kindergarten - Door 1 (Bowers Street/New Entrance Door) at 2:30 pm (First week only)

Grade 1 - Door 12 (Next to Bowers Street)

Grade 2 - Door 3 (Garden/Nashua Grows side)

Grade 3 - Door 5 (Service Road - Back of School)

Grade 4 - Door 4 (Large Playground)

Grade 5 - Door 4 (Large Playground)

If your dismissal plans have changed, please contact the Main office at 603-966-2100 ASAP. All dismissals must be verified by Parent/Guardian.

\*Please be patient during dismissal as it is our first priority to keep students safe.



[zoom\\_out\\_map](#)

## 21 Century Afterschool

[Submit Student Enrollment Application HERE!](#)

**Please make sure to select Dr. Crisp Elementary School when registering.**

This year, we have made some important updates to our registration process to better serve our community and meet the requirements set by our federal grant from the New Hampshire Department of Education. Please take a moment to review these key changes:

- 1. Enrollment Process:** Enrollment will be on a first-come, first-served basis, while also reserving space for students identified by school leadership, teachers, and student support teams as most in need of support. Please note that submitting an enrollment application does not guarantee acceptance into the program. We will notify families of their enrollment status as soon as possible.
- 1. Returning Students:** We value the continuity of education for our students. To ensure that returning students have the opportunity to continue their learning journey with us, we have allocated specific spots for them in the upcoming year.
- 2. Referred Students:** In accordance with our federal grant guidelines, we will also be reserving registration spots for students who are referred to our program. This practice is similar to the approach we took during our summer Power Scholars program and is essential for maintaining the support provided by our federal funding.
- 2. Non-program Days:** The 21st Century program will no longer offer complimentary memberships for the Boys & Girls Club of Greater Nashua as an alternative after-school option. While 21st Century will remain closed on non-school days such as Early Release, holidays, and school vacation days, we encourage you to reach out to youth-serving organizations like the [Boys & Girls Club of Greater Nashua](#), [Girls Inc.](#), [the Police Athletic League](#), [the Salvation Army](#) or [the YMCA of Greater Nashua](#) to inquire about your child's ability to attend their programs on days that 21st Century is not available. Please note

that these organizations may have separate costs for membership to their programs. Please be sure to familiarize yourselves with our [program calendar](#) so that you are aware of days that the 21st Century program will not be offered.

We understand that these changes may affect the registration process for some of our families. However, these adjustments are necessary to comply with the requirements that allow us to continue offering the high-quality programming you've come to expect from us.

We appreciate your understanding and cooperation as we implement these new registration practices. Should you have any questions or need further clarification, please do not hesitate to reach out to our program office.

Thank you for your continued support, and we look forward to another successful year together!

Janell Davis, Site Coordinator, Dr. Crisp Elementary School

## **Popcorn!**

We will be sending home Popcorn Information to families. Please be on the look out or reach out to your child's teacher.



BI- WEEKLY

# POPCORN SALE



ONLY \$1.00 per  
bag or \$15.00 for  
the year if you  
prepay



**START DATE 10/2/24 - END DATE 6/2/25**

[zoom\\_out\\_map](#)

**VENTA DE PALOMITAS DE MAÍZ QUINCENAL**

**SOLO \$1,00 por bolsa o \$15,00 por año si paga por adelantado**

**FECHA DE INICIO: 2/10/24 - FECHA DE FINALIZACIÓN: 2/6/25**

[zoom\\_out\\_map](#)

## Parking

Our Parking lot is for Staff ONLY during school days. Please park on Arlington St during Arrival and dismissal.

**No Parking on Bowers Street.**

## Car Drop Off for Students

From 8:00 - 8:15 am, We will open the Car Drop off Lane, located in front of the Main Entrance, for families to Drop Off children. Those students can walk into the building via Door 2.

Use extreme caution while driving through the parking lot. We have lots of walkers.

## Before School Breakfast

Before School Breakfast Opportunity.

Students can enter the building through the Cafe Door (Door 7) to have breakfast starting at 7:30 ending at 8:00.

At 7:45 - Staff members will be on the playground for "Morning Recess" - Please note - No Supervision prior to 7:45.

During inclement weather, students can go to Gym at 7:45 - 8:00.

Delayed Opening Days - No Before School Breakfast will be available. Students will get breakfast during the school day.

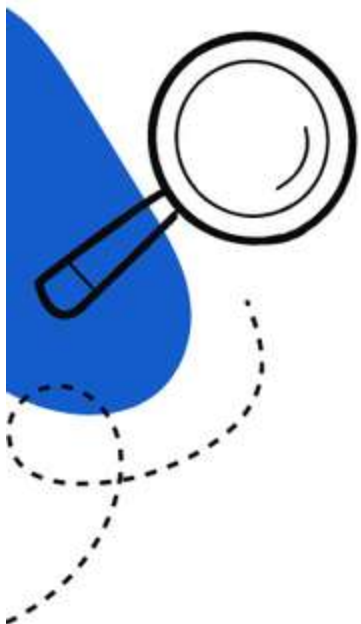
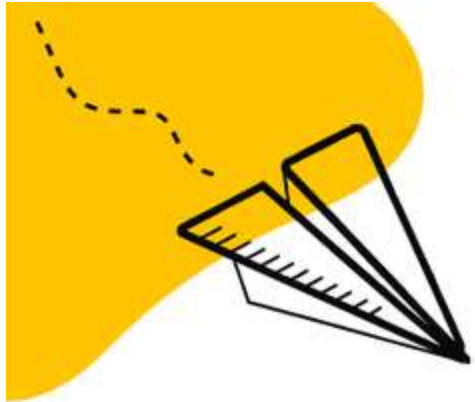


[zoom\\_out\\_map](#)

## **Emergency Preparedness**

At Dr. Crisp, we practice 10 Emergency Drills every year to ensure our staff and students know protocols to keep everyone safe. Please review [this document](#) for more information about what those are.





DR.  
CRISP  
OPEN  
HOUSE

Sept 19, 2024  
5 - 6:30 pm





# Respiratory Virus Guidance Snapshot

## Core prevention strategies



### Immunizations



### Hygiene



### Steps for Cleaner Air



### Treat



## Additional prevention strategies

### Masks



### Distancing



### Tests



### Layering prevention strategies can be especially helpful when:

- ✓ Respiratory viruses are causing a lot of illness in your community
- ✓ You or those around you have risk factors for severe illness
- ✓ You or those around you were recently exposed, are sick, or are recovering

\*Stay h

Yo  
are



[Below are links for the District School Calendar and Breakfast/Lunch Menus](#)



## **MySchoolBucks**

Pay for school meals and fees securely online! With MySchoolBucks, parents can also view cafeteria purchases, access meal balances, register for activities, purchase event tickets, browse school items, and more.

[launchmyschoolbucks.com](https://launchmyschoolbucks.com)

<https://www.nashua.edu/cms/lib/NH50000505/Centricity/Domain/692/Approved%202024-2025%20Calendar%20R.pdf>

launchnashua.edu

<https://www.nashua.edu/cms/lib/NH50000505/Centricity/Domain/243/August%202024%20New%20Breakfast%20Menu.pdf>

launchnashua.edu

<https://www.nashua.edu/cms/lib/NH50000505/Centricity/Domain/243/August%202024%20Lunch%20Elementary%20New%20Menu.pdf>

launchnashua.edu

<https://www.nashua.edu/cms/lib/NH50000505/Centricity/Domain/243/2024%20September%20Breakfast%20Menu%20New.pdf>

launchnashua.edu

<https://www.nashua.edu/cms/lib/NH50000505/Centricity/Domain/243/September%202024%20Elementary%20Luch%20Menu.pdf>